

Inspecting wheels at full speed.



ZEISS BOSELLO WRE thunder



ZEISS BOSELLO WRE thunder

Inspecting alloy wheels quickly in the cycle of production? With ZEISS BOSELLO WRE thunder – as one of the fastest systems for 2D X-ray inspection of alloy wheels – this is possible. You can check a wide range of wheel models and detect unconformities according to most of the foundry automotive specifications.



SECURE GRIP

The individually driven and motor-controlled rollers ensure a strong and secure hold as well as high speed and accuracy for 360° inspection. Even heavy and large wheels can be safely inspected and transported due to the extremely robust multiple chain conveyor.



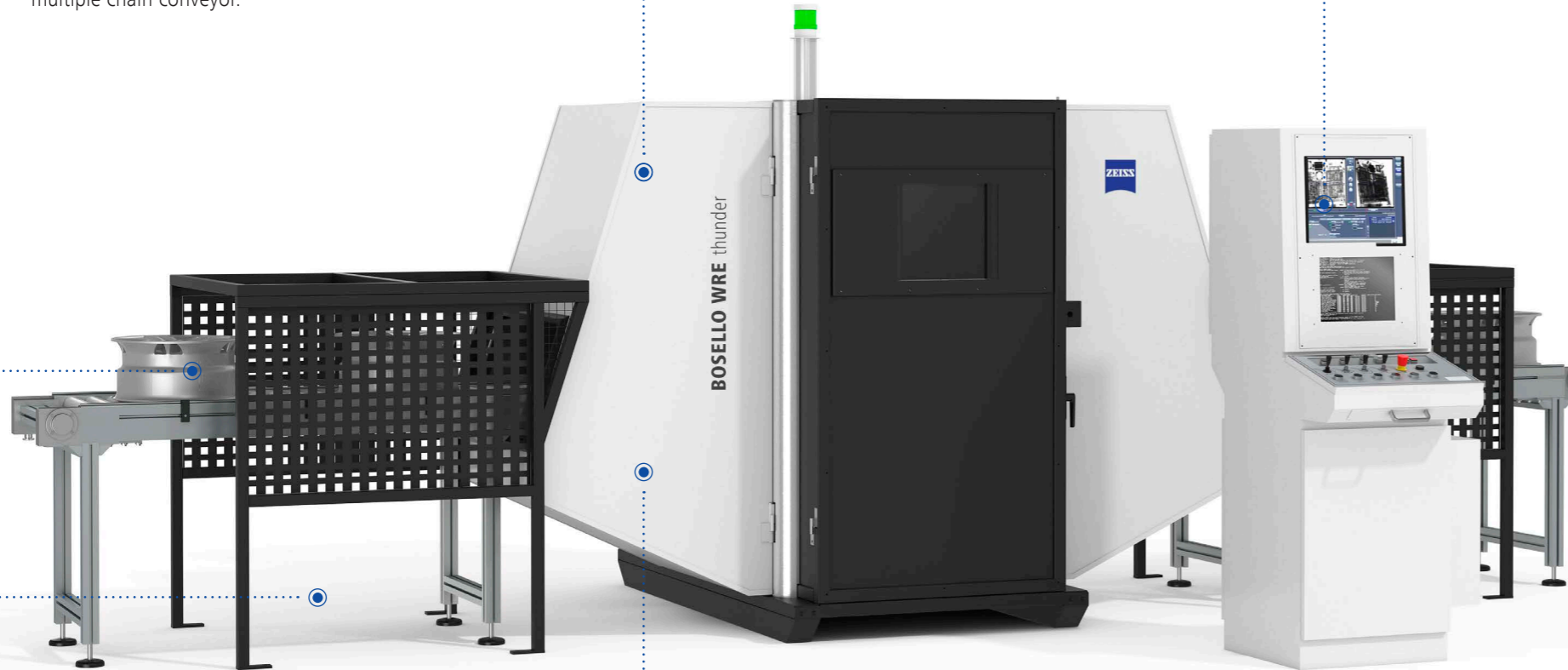
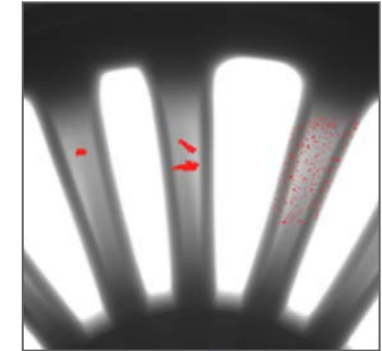
SAVE TIME

The pass-through concept of the system and a fast change of wheels in less than 2.5 seconds, allows fastest inline inspection. This also applies when inspecting different sizes of wheels.



AUTOMATIC INSPECTION

The automatic classification and inspection of wheels with the in-house developed ADR software ensures reliable quality assurance for best quality of your parts. Non-compliant wheels are automatically rejected.



SAVE SPACE

Inspect your wheels on the smallest space in your production. With ZEISS BOSELLO WRE having a footprint of only 6 m², you save a lot of valuable space!



ROBUST & RELIABLE

ZEISS BOSELLO WRE thunder has proven to be the perfect fit for the production environment for almost 20 years. With its strong and robust mechanical structure it is designed for long and continuous use in a heavy industrial environment.

ZEISS BOSELLO WRE thunder – FEATURES

Wheel size range	4J x 13" to 11J x 22"*
Max. weight of inspection item	50 kg
Output voltage	160 kV
Pixel size 8 inches FPD detector	200 µm / 400 µm
Idle time between scans	≤ 2.5 seconds
Compatible software	BHT ADR

*Up to wheel size of 4J x 14" to 11J x 26"

Carl Zeiss
X-ray Technologies Srl
21012 Cassano Magnago, VA / Italy
Phone: +39 0331 776109
Email: xray.iqs.it@zeiss.com
Internet: www.zeiss.it/bosello

Carl Zeiss
Industrial Metrology, LLC
6250 Sycamore Lane North
Maple Grove, MN 55369/USA
Phone: +1 763 744-2400
Fax: +1 763 533-0219
Email: info.metrology.us@zeiss.com
Internet: www.zeiss.com/bosello