



## **ZEISS METROTOM 1500**

When accurate CT technology meets industrial performance



# ZEISS METROTOM 1500

The third generation of the computed tomograph (CT) ZEISS METROTOM 1500 provides the best evidence that advanced and reliable X-ray technology is no longer a vision of the future. You can future-proof your non-destructive quality control – today.



## SCAN FASTER

The scan time can be reduced by up to 75% through different operation modes of the detector, while achieving a comparable voxel size as with a 2k detector.

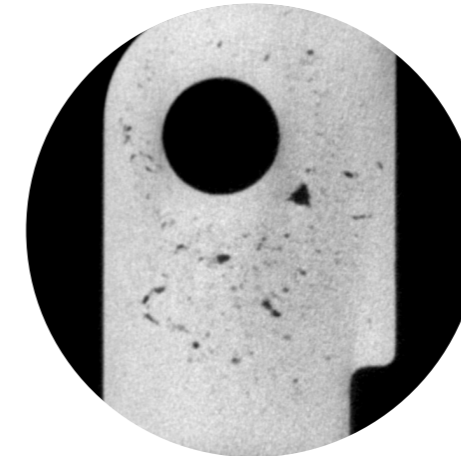


## SEE MORE

In the third generation, a new 3k detector generates 3D volume data sets with higher resolution, i.e. more voxels permitting the detection of smaller defects.

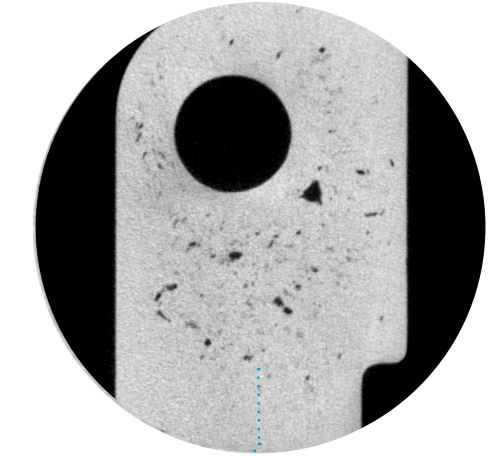
### VOXEL SIZE 2K DETECTOR

79.4  $\mu\text{m}$



### VOXEL SIZE 3K DETECTOR

57.9  $\mu\text{m}$

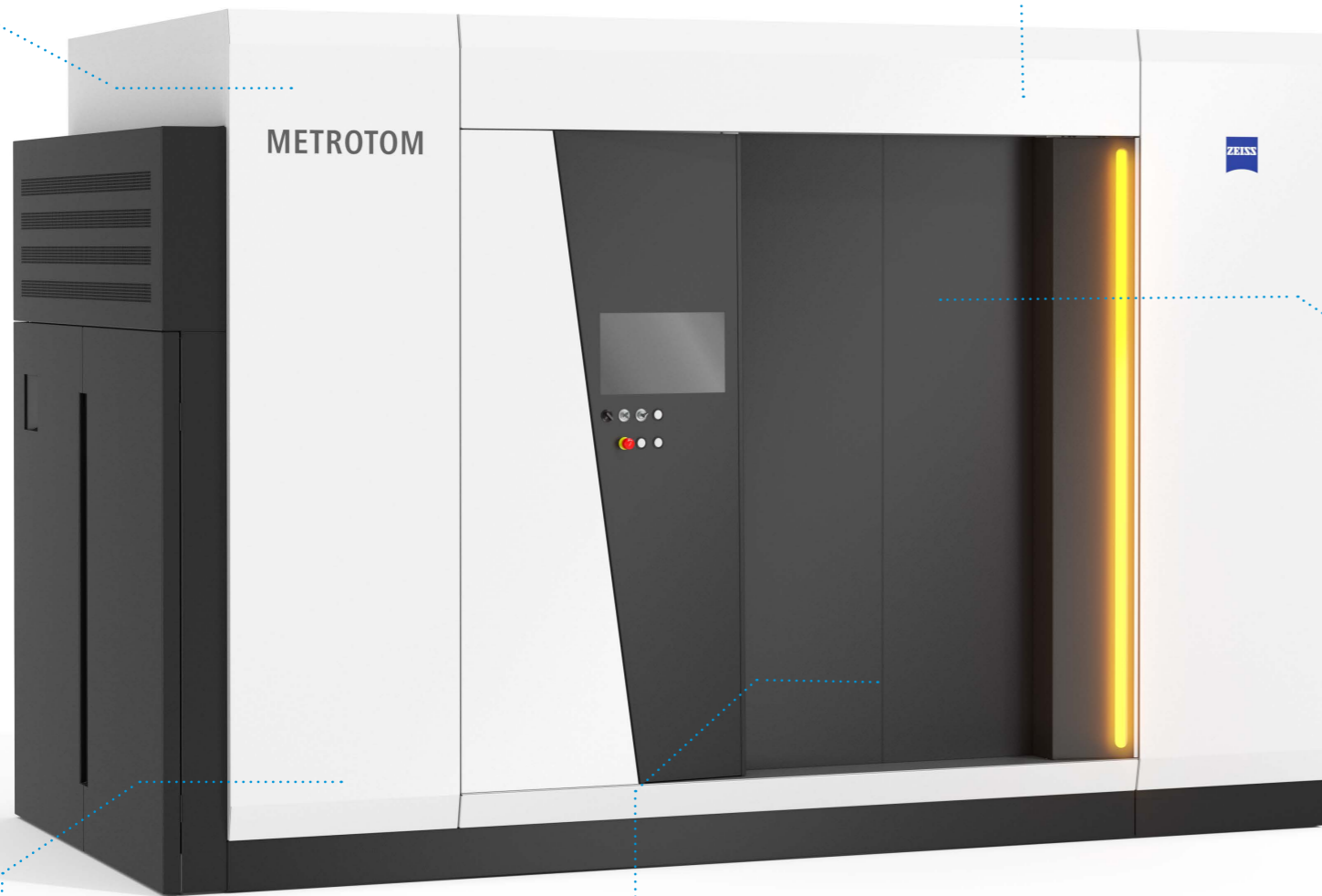


Smaller details now become visible thanks to a higher resolution of the 3k detector.



## SCAN LARGER PARTS

In order to get the most out of your space in your measuring lab, the measuring volume was extended while reducing the footprint. Measure and inspect parts up to 870 mm in height on 6.7 m<sup>2</sup> – the best system/part volume ratio available on the market.



## GET RELIABLE RESULTS

Thanks to ZEISS' high competence in metrology transferred into CT technology, you can rely on a high metrology performance. A MPE<sub>SD</sub> of 4.5 + L/50  $\mu\text{m}$  referring to VDI/VDE sheet 1.3 is guaranteed in the entire field-of-view – for measuring results you can trust.



## SMART DESIGN

The reduced footprint of only 6.7 m<sup>2</sup> and the clever construction of the service door allow for flexibility of installation in a small space within your measuring lab. For convenient and safe loading of large and heavy parts, the operator can enter the system through the front.

## ZEISS METROTOM 1500 – FEATURES

	In the image	Ø 330 mm, h 270 mm
<b>Measuring range</b>	With max. vertical image field extension	Ø 330 mm, h, 870 mm
	With max. vertical & horizontal image field extension (optional)	Ø 615 mm, h 800 mm
<b>Max. workpiece sizes with limitation of travel and measuring range</b>	Optimized for max. diameter	Ø 770 mm, h 1350 mm
	Optimized for max. height	Ø 516 mm, h 1500 mm
<b>Max. workpiece weight</b>	In kg	50
<b>Compatible software</b>	ZEISS METROTOM OS, ZEISS CALYPSO, ZEISS NEO insights, ZEISS PiWeb	

**Carl Zeiss**  
**Industrielle Messtechnik GmbH**  
73446 Oberkochen/Germany  
Sales: +49 7364/20-6336  
Service: +49 7364/20-6337  
Fax: +49 7364/20-3870  
Email: [info.metrology.de@zeiss.com](mailto:info.metrology.de@zeiss.com)  
Internet: [www.zeiss.com/imt](http://www.zeiss.com/imt)

**Carl Zeiss**  
**Industrial Metrology, LLC**  
6250 Sycamore Lane North  
Maple Grove, MN 55369/USA  
Phone: +1 763 744-2400  
Fax: +1 763 533-0219  
Email: [info.metrology.us@zeiss.com](mailto:info.metrology.us@zeiss.com)  
Internet: [www.zeiss.com/metrology](http://www.zeiss.com/metrology)