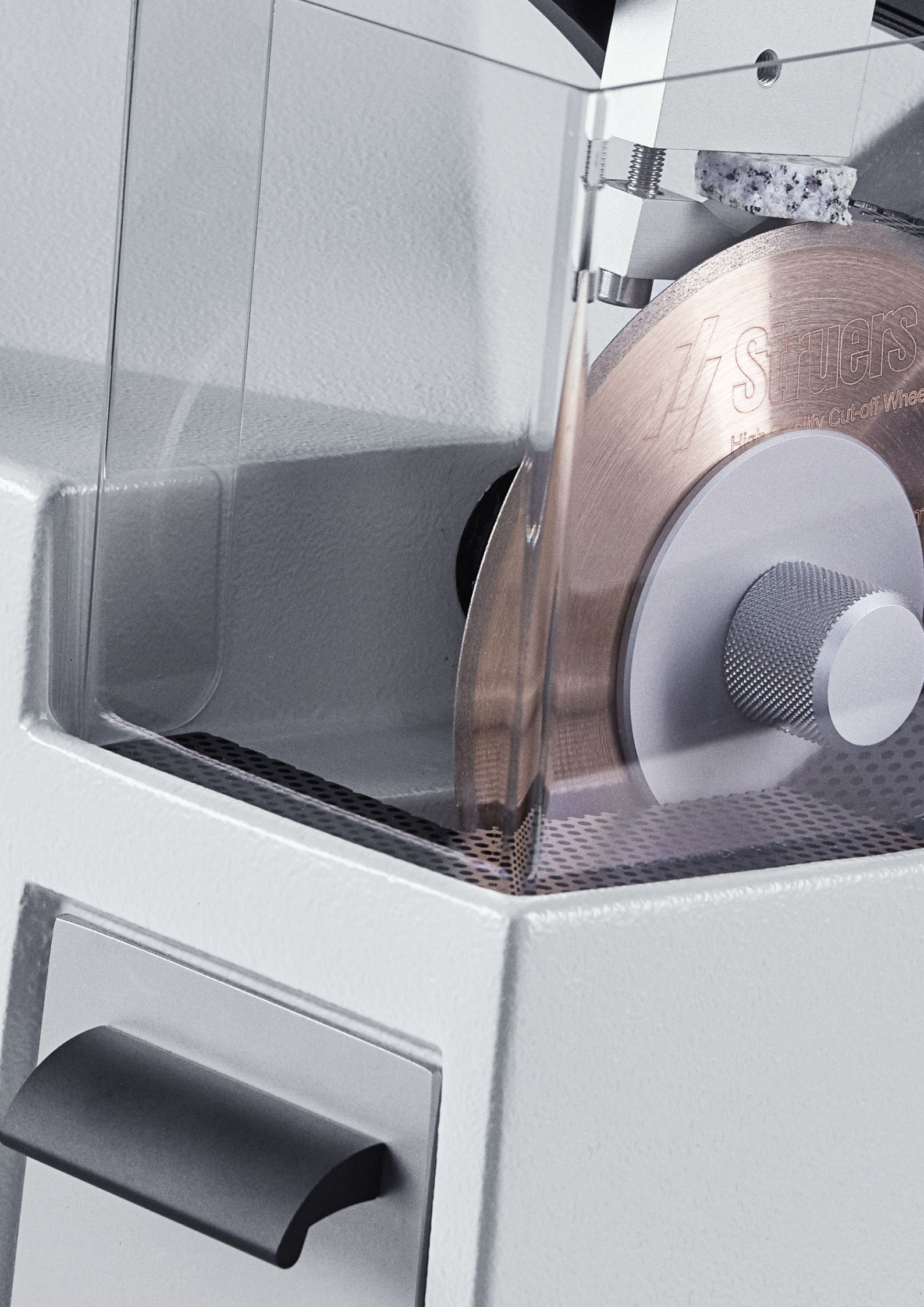




# Low-Speed Precision Cutting Machine for Gentle Sectioning

Workpieces up to 30 x 40 mm | Precision cutting



STUERS  
High Quality Cut-off Wheel



# Small Automatic Precise

Meet the small, low-speed, automatic, precision cutting machine for sectioning materialographic workpieces.

The Minitom precision cutter is for you who section smaller, delicate workpieces that cannot tolerate the heat generated by high-speed sectioning.

A gravity feed design in your Minitom precision cutter allows for sectioning various types of materials with high reproducibility and creating minimal deformation, using only CBN and diamond cut-off wheels.

Welcome to the world of Minitom.

# 5

## Features That Keep You Precise

### **Constant speed, even at high load**

You can vary the cutting speed of Minitom, and the motor is designed to ensure that the speed you select remains constant even at high load.

### **Set specimen size with highest accuracy**

The required specimen width can be set with an accuracy of + 0.01 mm, utilizing a micrometer screw, and the sectioning pressure can be selected independently from the weight of the workpiece.

### **Thermal overload protection**

The motor is equipped with thermal overload protection, although before switching out, an overload indicator provides a visual warning that either the cutting procedure should be stopped, or the sectioning pressure should be reduced.

### **Adjust to stop at any stage**

Minitom can be adjusted to stop sectioning at any stage of the operation, e.g., when the material is cut through. The cutting process is liquid-cooled, with the cooling liquid draining back continuously into the coolant tank.

### **Set to operate in just a few minutes**

Minitom is very easy to operate, with fixation of the workpiece and the setting of stop position, cutting pressure and cut-off wheel rotation speed taking only a few minutes.

Fasten the workpiece in a holder mounted on the movable arm. This arm acts as a steelyard with two weights, one of which balances the holder with the workpiece, the other being used to set the exact cutting pressure. During the cutting operation, the arm is guided down over the cut-off wheel using the pressure from the cutting weight.

The coolant tank is straightforward to remove and makes its cleaning simple. Minitom's practical and attractive design is the product of a very extensive program of design development.



Want to know more? Go to [struers.com/Minitom](https://struers.com/Minitom)

# More Than 140 Years of Fine-Tuned Service

Don't hesitate to use it.



When you choose any equipment from Struers, you also choose some of the top specialists in the world along with a wide range of support at your fingertips. This includes:

- Access to our global support hotline
- Specialist counseling on how to optimize your individual processes
- All critical spare parts available for immediate shipping
- An annual service review
- Online manuals

## Specialist counseling

You can always, and at no expense, contact Struers' experienced application specialists with any questions you might have regarding your Struers equipment, best practice testing, or your specific testing situation. That is a natural part of your Struers equipment purchase. Just go to [struers.com/contact](https://www.struers.com/contact) or contact your local specialist.

# Extra Services



## ServiceGuard

Which service is right for you?

Struers ServiceGuard covers a comprehensive range of technical services and training, including service plans, service packages, single services, and spare parts.

Our global network of technical service engineers will work with you to determine the service level best suited for your requirements.

See more at [struers.com/service](https://struers.com/service)

**Service | Guard** 



## Application assessment

Let's discover your optimization opportunities.

A Struers Application Specialist visits your facility to perform an in-depth assessment of your use of Struers equipment, materialographic processes, and workflows. The specialist identifies quality and optimization opportunities and provides you with practical tips.

Want to know more? Go to [struers.com/Minitom](https://struers.com/Minitom)

# Technical Data

## Model

	<b>Minitom</b>
Specimen holder arm	
Balance weight	200 g / 7 ounces
Cutting weight	350 g / 12 ounces
<b>Cut-off wheel</b>	
Size	75 - 125 mm / 3 - 5"
Arbor size	12.7 mm / 0,5"
Rational speed	100 - 420 rpm
Cutting capacity	30 x 40 mm / 1.2" x 1.6"
Motor power	38 W
Controls	Touchpad and turn knob
Recirculation cooling tank	250 ml / 0.07 gallons
Noise level	L <sub>PA</sub> = 58 dB(A)
Surrounding temperature	5 - 40° C / -13 -131° F
Humidity	< 95 % RH non-condensing
Supply	
Voltage / frequency	100 - 240 V / 50 - 60 Hz
Safety	In compliance with all relevant EU directives
<b>Dimensions and weight</b>	
Width	28 cm / 11"
Depth	40 cm / 15.7"
Height	40 cm / 15.7"
Weight	8 kg / 17.6 lbs.

Struers' equipment is in conformity with the provisions of the applicable International Directives and their appurtenant Standards.  
(Please contact you local supplier for details.)



# Accessories and Cut-Off Wheels

For your customized sectioning solution, please choose from a wide range of accessories and cut-off wheels.

## Cut-off wheels

Struers' cut-off wheels are designed for Struers' cutting machines and cover the full range of materials that are met in materialographic applications.

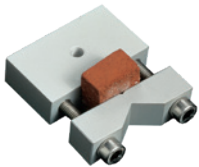
Minitom uses CBN and diamond cut-off wheels with a diameter of 75 mm (3.0") to 127 mm (5.0") and a center hole diameter of 12.7 mm (1/2"). The cut-off wheels are available with different grain sizes and concentrations.

To find the perfect cut-off wheel for your job see the Cut-Off Wheel selection guide in the **Consumables Catalog**.



## Specimen holders

Minitom can be supplied with a variety of specimen holders to suit a wide range of workpiece types. Specimen holder ISONI is delivered along with Minitom.



Cat. no.:  
04436901

**Specimen holder ISONI, for general use**  
Vice type with max. opening 25 mm / 1".



Cat. no.:  
04436902

**Specimen holder ISOLA, for long specimens**  
Double parallel vice with max. opening 25 mm / 1".



Cat. no.:  
04436903

**Specimen holder ISORU, for round specimens**  
Max. opening 30 mm dia.



Cat. no.:  
04436904

**Specimen holder ISOSK, for irregularly shaped specimens**  
With five screws. Max. opening 30 mm.



Cat. no.:  
04436905

**Specimen holder ISOFA, for adhesive mounting of specimens**  
30 x 40 mm.



Cat. no.:  
04436906

**Specimen holder ISOOP, for round specimens**  
Teardrop type with max. opening 20 mm dia.

# 6 Ways to Improve the Speed and Efficiency of Your Cutting

An efficient sample analysis process starts with the cutting. Get your cutting right to improve your sample quality and save time in the next step of the process.

## Learn how to:

- Improve your cutting precision
- Increase your reproducibility
- Step up the speed of your cutting

Read the full article at [struers.com/qualitycutting](https://www.struers.com/qualitycutting)

## Discover the Full Range of Struers Cutting Machines

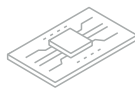
What size is your workpiece?



Max. 30 x 40 mm



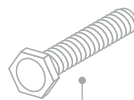
**Minitom**



Max. 35 x 80 mm



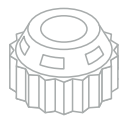
**Accutom**



Max. 50 x 165 mm



**Secotom**



non-automatic  
Max. 62 x 250 mm



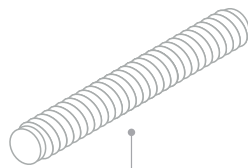
**Labotom**



Max. 105 x 102 mm



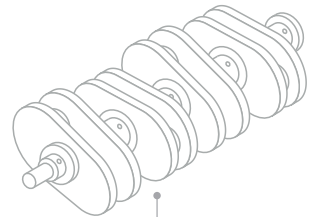
**Discotom**



Max. 125 x 290 mm



**Axitom**



Max. 190 x 254 mm



**Magnutom**

Want to know more? Go to [struers.com/Minitom](https://www.struers.com/Minitom)

## Ensuring certainty

Materialographic preparation and testing demands consistent, reproducible results. These come not only from your laboratory process, operators and equipment, but from your supply chain and your partner. As a Struers customer you benefit from high quality design and engineering of equipment and consumables, but just as much from our unique knowledge base, robust global supply chain, and expert service and applications support – where and when you need it. We call all this ensuring certainty

Struers remains dedicated to making the world a better place through the pursuit of deep scientific insights and ground-breaking technology. Today, we're your trusted partner in a fast-changing world, sharing our expertise and practical experience on a global scale. This gives you innovative solutions that help you face the future with confidence. We continue to lead the way in materialographic products and services, and to shape future developments towards a better society.

[www.struers.com](http://www.struers.com)